



...PEARL | GULF



PEARL 82

THE ALL NEW PEARL 82

MAIN FEATURES

- Raised pilot house design with full beam main deck master stateroom
- Five beautifully appointed en-suite staterooms plus crew accommodation
- Direct access from main deck master stateroom to forepeak terrace
- Choice of aft deck layouts - Riviera or Veranda - to appeal to different Owners' yachting lifestyles
- Large garage to accommodate Williams 345 jet tender, Sea Doo Spark, SeaBob
- Foredeck lounge with large sun-pads, seating and table
- Direct access from the flybridge to the foredeck lounge
- Extended flybridge with a full-sized dining table, multi-functional wet bar, and sun pads
- Flybridge hard top with tilt and slide sunroof
- Choice of three interior design styles by renowned British design star Kelly Hoppen CBE
- Naval Architecture and exterior design by Bill Dixon from Dixon Yacht Design
- Comprehensive Five Year warranty

EXTERIOR

























I N T E R I O R















MASTER STATEROOM



MASTER STATEROOM



MASTER STATEROOM EN SUITE



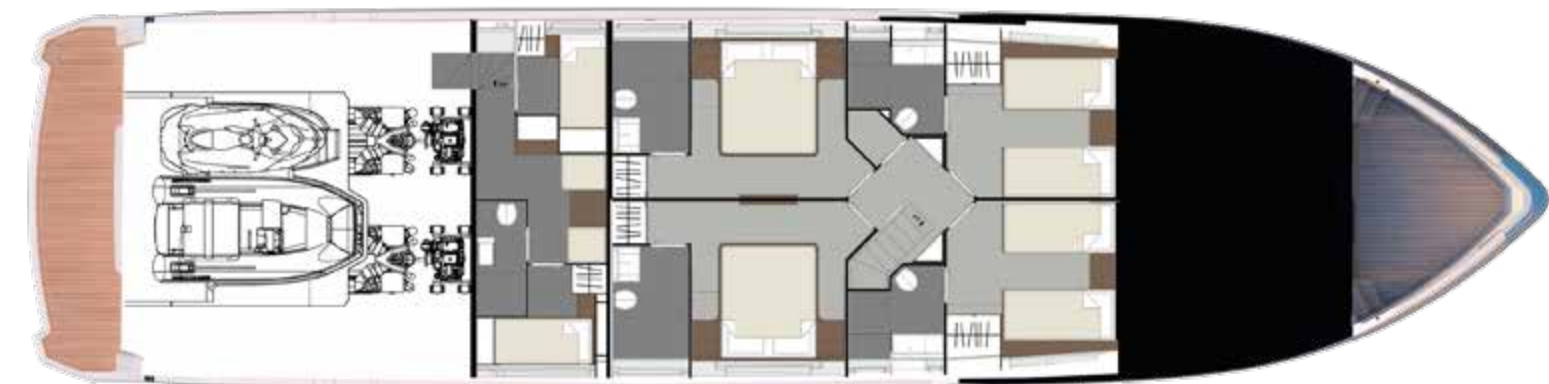
GUEST STATEROOM 1



GUEST STATEROOM 2



2X TWIN STATEROOMS



DIMENSIONS:

Overall Length	82'6"	25.20m
Maximum Beam	20'9"	6.34m
Draft	6'3"	1.20m
Fuel capacity	1611 US gallons	6100 litres
Water capacity	369 US gallons	1400 litres
Lightship Displacement		78.4 tonnes

POWER:

Standard Engines	2 x MAN 1650HP - 28 knots*
Engine option 1	2 x MAN 1900HP - 32 knots*
Engine option 2	2 x MAN 2000HP - 33 knots*

Performance figures are given in good faith. The loading of the vessel and fouling to the hull, as well as sea state will have an effect on performance. For these reasons we can give no guarantee on performance or range estimations.

**preliminary data*



RIVIERA

AFT DECK CONFIGURATION



VERANDA

AFT DECK CONFIGURATION

STANDARD FEATURES:

- Twin MAN 1650 HP engines on shaft drive
- 28.5 KW 50HZ Kohler generator
- Med spec air conditioning
- Crew cabin
- Garage
- Opacmare Hydraulic Passerelle
- H&B hydraulically operated bathing platform
- Side Power bow thruster
- Fusion sound system with speakers throughout
- 5 screen Integrated Garmin Navigation system
- Teak laid cockpit, bathing platform and steps
- Teak flybridge and side decks
- Full set of exterior covers
- Humphree Interceptors with auto trim assist
- Lewmar hydraulic anchor winch with deck and helm controls
- Flybridge wetbar with sink, fridge cool box and BBQ

OPTIONAL EQUIPMENT:

- MAN 1900 HP or 2000 HP Engine Options.
- Hard top with sunroof
- Tropical air-conditioning
- Seakeeper SK26
- Sleipner Vector Fins 1350 stabilisers
- Fold down side wings in cockpit
- Tender & Jet ski recovery systems
- Hot Tub fitted to flybridge
- Hydraulic Bow & Stern Thrusters
- Sonos Audio system
- MCA coding



CUSTOMER CARE

THE PEARL PROMISE

Nobody does more to support you on your journey to Pearl ownership and beyond. Whatever you need to make the most of your Pearl experience, we'll always be on hand to advise and inspire.

AFTERSALES & SERVICE

At Pearl, we believe that the same level of care and attention you received during the purchasing process should remain throughout time as an owner. It's an ethos that runs through everything we do. One that ensures you have access to the support of a Pearl agent wherever you and your yacht reside.

DELIVERY

Delivery of a Pearl yacht is a unique event. A moment as rewarding as the experiences you will encounter. From the build slot, to the delivery date, we do everything possible to ensure a seamless transfer of ownership. All we ask is that you only reserve your Pearl after you have experienced the model first hand during a sea trial or factory visit.

FINANCE

Our experts are available to make the journey to ownership even more accessible. By introducing you to finance houses such as Lombard Marine, you will have the freedom to discuss a tailored financial package that best reflects your situation.



5 YEAR WARRANTY

Each Pearl model benefits from an industry-leading comprehensive 5-Year Warranty, designed to safeguard your investment and give you absolute peace of mind long into the future.



...PEARL | GULF

sales@oceanworld.group

+971 52 404 2000