




100 YACHT



MAKE YOUR PRESENCE FELT EFFORTLESSLY. BREAK
BOUNDARIES WITH GRACE. BE POISED. MAKE A
SOPHISTICATED STATEMENT. WHEREVER YOU ARE,
FIND TRANQUILLITY.

100 YACHT

A TRUE SHOWPIECE, THE 100 YACHT IS A GRAND STATEMENT OF REFINEMENT AND SOPHISTICATION, ELOQUENTLY EXPRESSED THROUGH ITS STRIKING LINES, FULL BEAM MASTER CABIN, SEAMLESS TRANSITION FROM FLYBRIDGE TO FOREDECK, AND FULLY GLAZED WHEELHOUSE. HERE EVERYTHING IS POSSIBLE.







PRINCIPAL CHARACTERISTICS

LENGTH OVERALL
29.94M / 98'3"

BEAM
7.0M / 22' 11"

DRAFT
2.10M / 6' 10"

DISPLACEMENT
99,380 KG / 219,095 LB

FUEL CAPACITY
12,800 LITRES / 3,381 US GAL.

FRESH WATER CAPACITY
1,800 LITRES / 476 US GAL.

BLACK WATER CAPACITY
1,125 LITRES / 297 US GAL.

GREY WATER CAPACITY
1,125 LITRES / 297 US GAL.

ACCOMMODATION
UP TO 10 GUESTS & UP TO 5 CREW

ENGINE OPTIONS
MTU UP TO 5,280 PS

MAXIMUM SPEED
UP TO 30 KNOTS

RANGE @ 10/12 KNOTS
UP TO 1,300 NAUTICAL MILES

DRIVES
SHAFTS























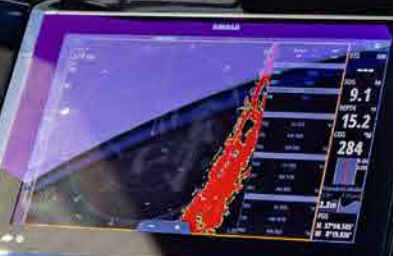


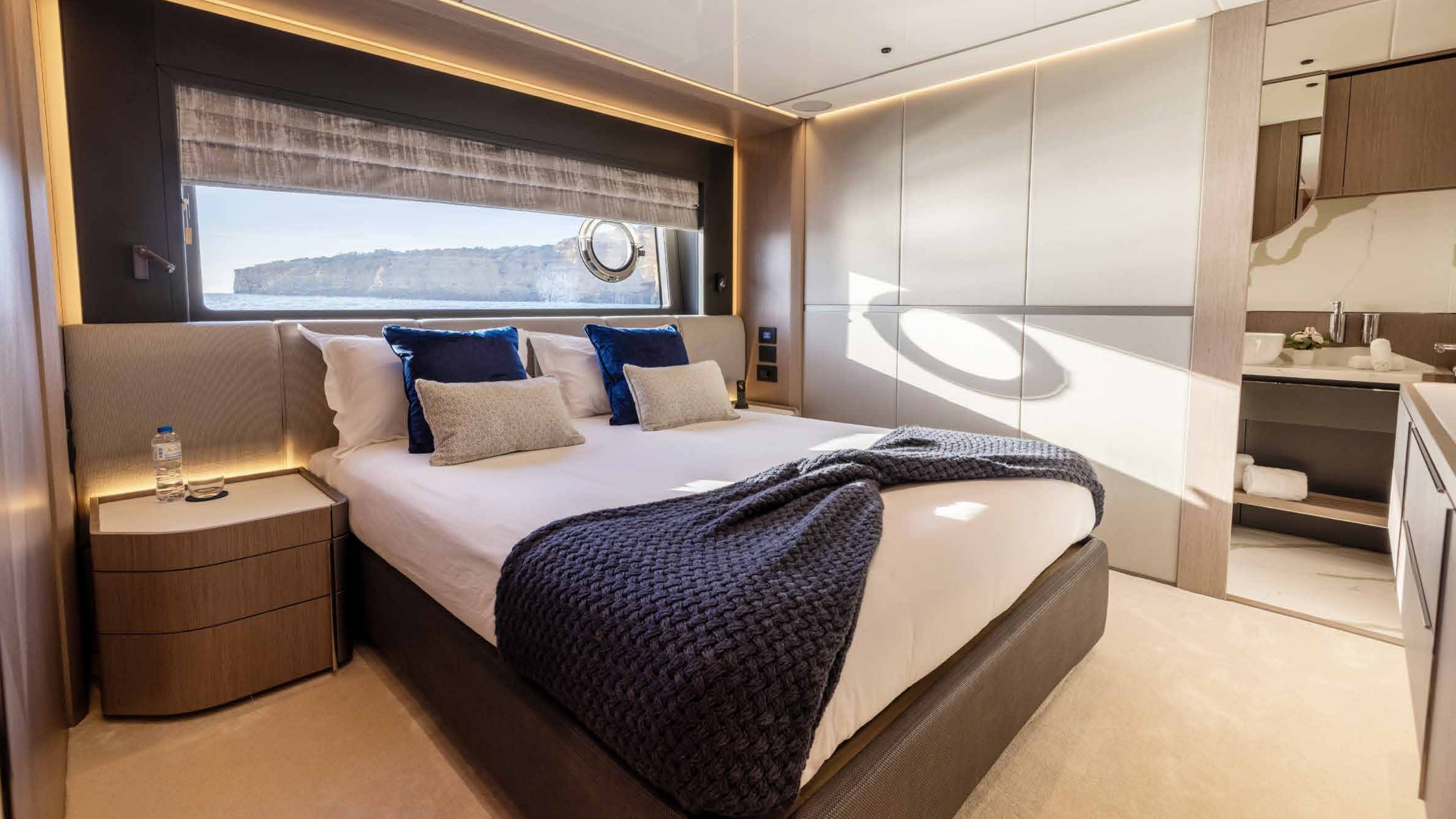










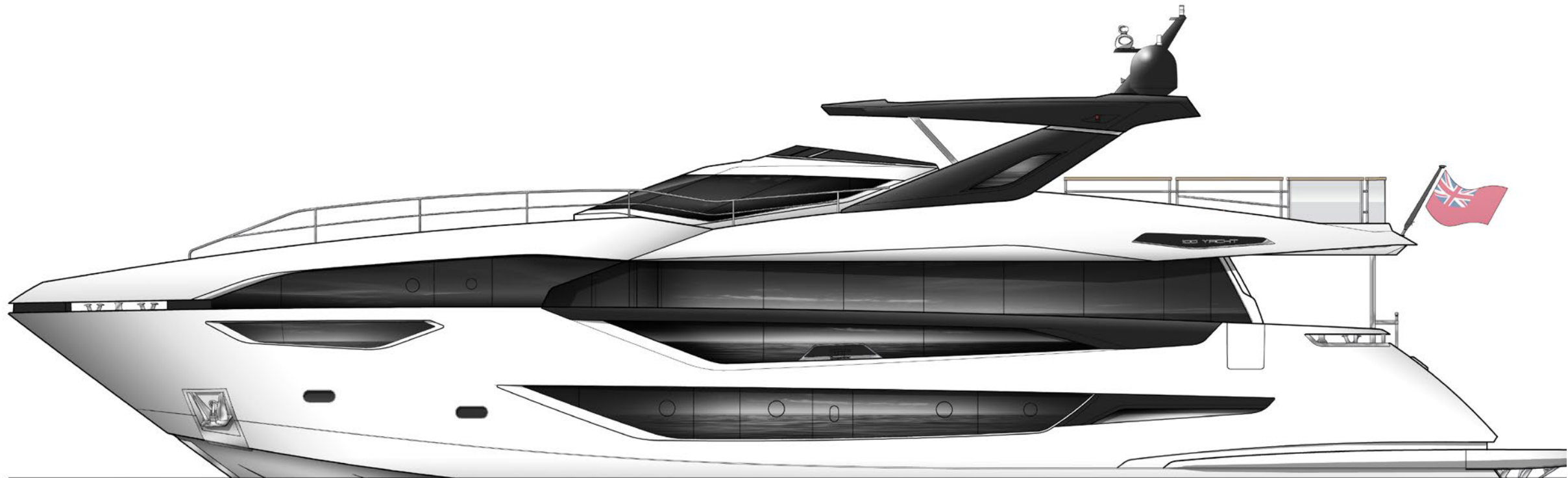




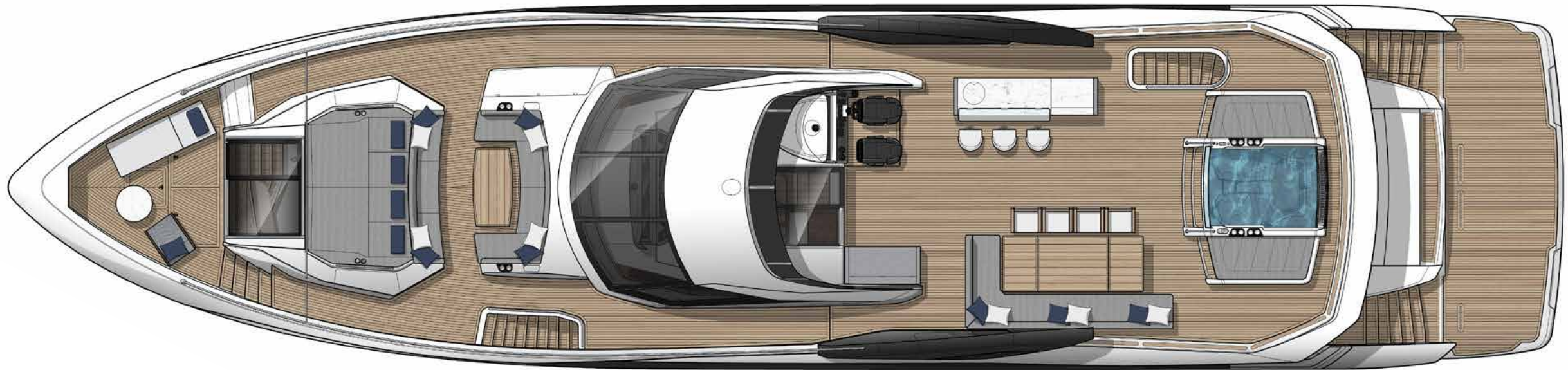




100 YACHT
GENERAL ARRANGEMENTS

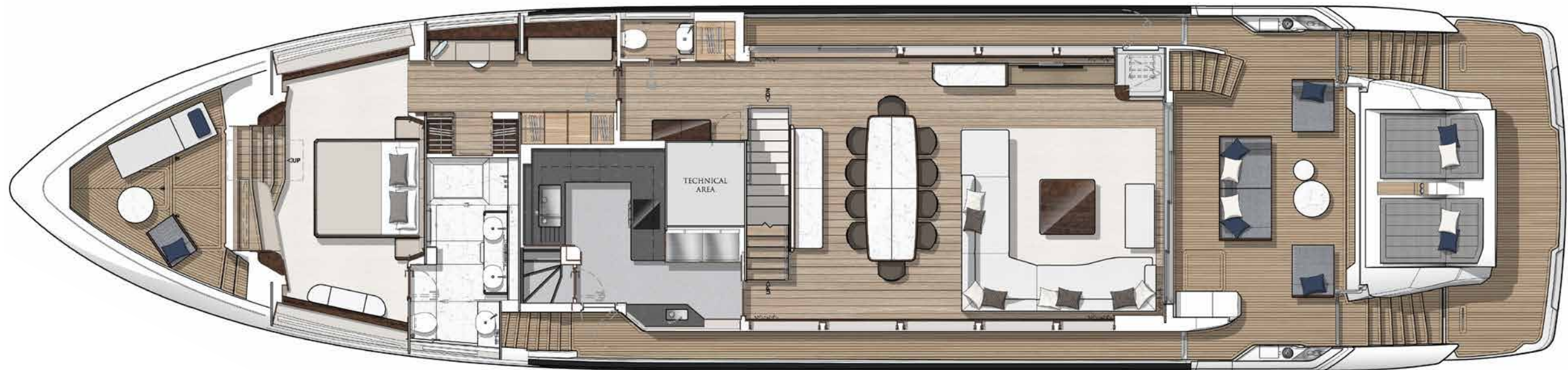


100 YACHT
GENERAL ARRANGEMENTS



EXTERIOR PLAN

100 YACHT
GENERAL ARRANGEMENTS



MAIN DECK

100 YACHT
GENERAL ARRANGEMENTS



LOWER DECK



sales@oceanworld.group

+971 52 404 2000